

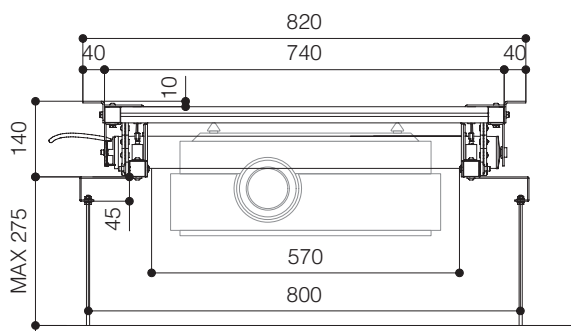
The **PROJECTOR LIFT VPH50HC** is studied in order to support large and heavy Professional and Home Cinema video projectors up to 30 Kg of weight. The lift has been developed to be installed inside **very narrow false ceilings of only 14 cm.** granting the best architectural solution in hiding projector, lift and cables.

The VPH50HC is supplied with a powerful and extremely silent motor that allows a descent from a minimum of 14 cm to a maximum extent of 54 cm. Moreover it is supplied with extendable side brackets in order to allow an easy fixing of the panel of your false ceiling by adjustable threaded bars.

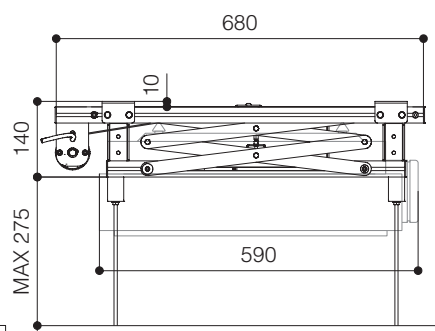
The lift VPH50HC is equipped with **safety screws** which prevent the lift to extent further to the preset end stop, in case of failure.

\* Ceiling cover plate is **NOT** included

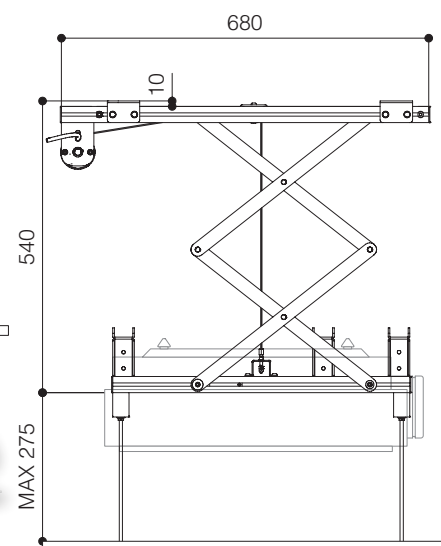
Frontal view closed



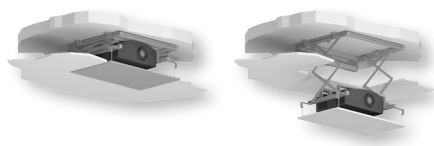
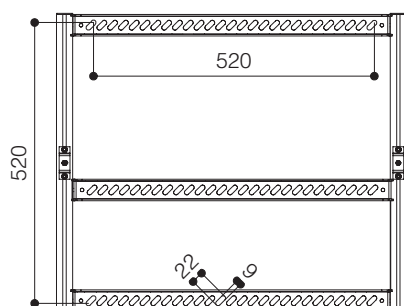
Side view closed



Side view open



Maximum size projector anchoring points



### Optionals:

- Ceiling tile holder CT-720
- Kit RF remote control with external receiver
- Interface switch 12 volt
- Low voltage contact interface

\*With lift in closed position **minimum height** required **in false ceiling**:

-> **Projector height + 4 cm. + thickness ceiling cover plate**

(In any case, minimum height required in the false ceiling: 14 cm.)

### TECHNICAL SPECIFICATIONS

|                                      |                           |
|--------------------------------------|---------------------------|
| POWER SUPPLY                         | 220-230V - 50HZ           |
| MAXIMUM CONSUMPTION                  | 184 W                     |
| TORQUE                               | 20 Nm                     |
| MOTOR SPEED                          | 17 rpm                    |
| MINIMUM DIMENSIONS LIFT CLOSED       | 740x140x680 (WxHxD in mm) |
| DIMENSIONS LIFT OPENED               | 740x540x680 (WxHxD in mm) |
| MAXIMUM SIZE FIXING POINTS PROJECTOR | 520x520 (WxD in mm)       |
| MAXIMUM SIZE OF PROJECTOR            | 570x590 (WxD in mm)       |
| MAXIMUM LOAD                         | 30 Kg                     |
| NET WEIGHT OF THE PROJECTOR LIFT     | 13 Kg                     |
| CABLE MANAGEMENT SYSTEM INCLUDED     |                           |

**Warranty:** 5 years on the motor - 24 months on the other components